

Gorilla Trekking Expedition

Summary: Embark on a *Gorilla Trekking Expedition* with Visit Uganda Tours and Travel, delving deep into Bwindi Impenetrable Forest – home of the endangered mountain gorillas.

This adventure is a modern, immersive journey: you'll navigate misty jungle trails, encounter a gentle silverback gorilla eye-to-eye, and explore hidden communities in Uganda's south.

Along the way, enjoy cultural exchanges and beautiful scenery.
stops.

The Pearl of Africa's rich biodiversity awaits, from bird-filled treetops to forest elephants.
unique itinerary weaves thrilling wildlife action with relaxation, perfect for the experiential traveler seeking a once-in-a-lifetime encounter.

Accommodation & Pricing (per person):

- *Standard:* Budget lodges or guesthouses (e.g., Buhoma Homestead, Kabalega Lodge) – **\$1,200** (7 days, twin-share, mid-range food).
 - *Mid-range:* Comfortable lodges (e.g., Primate Lodge Kibale, Mihingo Lodge) – **\$2,500** for similar program.
 - *Luxury:* Premium lodges (e.g., Bwindi Lodge, Mihingo Luxury Tents) – **\$5,000+**.
- (Prices include permits, transport, guide, lodging, and park fees on a full-board basis.)

Customizable Add-ons:

Visit Uganda Tours and Travel can tailor this safari: add an extra gorilla trekking permit for a second tracking, a guided Batwa Pygmy cultural walk, and chimpanzee trekking in nearby Mgahinga, or a soothing spa day after your trek. You might also extend with a balloon ride over the savanna or a ferry cruise on Lake Victoria.

Day 1: Transfer to Bwindi Impenetrable Forest (Approx. 450 km, 8–9 hrs)

Depart Entebbe/Kampala in a comfortable 4x4 vehicle heading west toward the "Mountains of the Moon."

After breakfast in Kampala, drive through lush tea country and the rolling hills of Fort Portal. En route, stop at the Equator for photos.

Lunch is served in Fort Portal before continuing to Bwindi (about 350–400 km from Kampala).

This scenic drive passes near Queen Elizabeth NP (watch for wildlife like baboons or antelope grazing by the roadside).

Arrive late afternoon at your lodge on the edge of Bwindi Impenetrable Forest, settle in amidst the sounds of the jungle, with a briefing on tomorrow's gorilla trek. *Overnight:* Lodge at Buhoma or Nkuringo (standard or mid-range), or the luxury Bwindi Lodge or Chameleon Hill for a premium antelopes' experience.

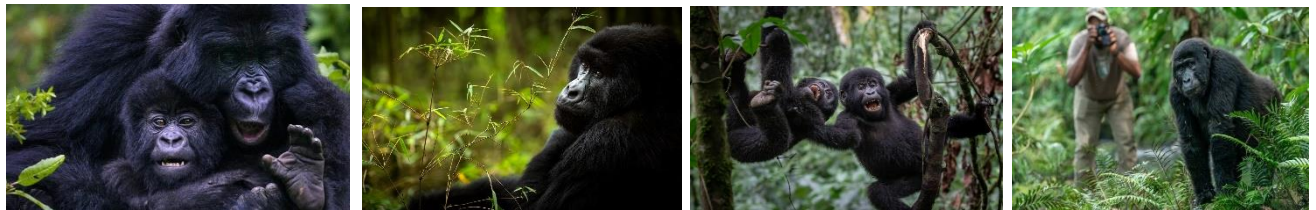


Day 2: Gorilla Trekking in Bwindi (Forest Walk, 2–8 hrs trekking)

Awake before dawn for the highlight of this safari: trekking mountain gorillas.

After breakfast, transfer to the park headquarters for a briefing. A maximum of eight trekkers will be assigned a habituated gorilla family. Follow your ranger into the dense forest: *expect 2–8 hours hiking* in steep, muddy terrain for that magical encounter. Observe silverback, females, and juveniles grazing and playing at close range. It is truly an "unforgettable encounter with the Gentle Giants".

After one hour with the gorillas (the maximum allowed), return to the trailhead. Late afternoon, transfer a short distance to Lake Bunyonyi for some relaxation. *Optional:* Enjoy a sunset canoe ride on Lake Bunyonyi's calm waters (extra cost). *Evening:* Campfire or lodge dinner, sharing your gorilla photos



Day 3: Lake Bunyonyi – Leisure and Canoeing (Forest views)

Sleep in and enjoy a leisurely breakfast overlooking Lake Bunyonyi ("place of little birds").

Spend the morning on a guided canoe or boat ride, exploring 29 islands and bird-watching (look for African fish eagles). The lake's volcano-shaped islands and wetlands are photogenic and peaceful.

After lunch, take a short nature walk through local villages or tea plantations along the lakeshore for cultural insight. In the afternoon, you could opt to visit a nearby family or farm stay for a traditional Ugandan coffee ceremony.

Return to your lakefront lodge by evening for dinner and relaxation.



Day 4: Drive to Lake Mburo National Park (Approx. 170 km, 4 hrs)

Today's road trip heads back north-east to the savannas of Lake Mburo NP.

After breakfast, drive through the verdant Ankole kingdom countryside (see herds of Ankole long-horn cattle).

Arrive at Lake Mburo by mid-day. Check into your lodge (standard: Ranch House Lodge; mid-range: Mihingo Lodge; luxury: Mantana & Rwakobo Rock).

In the afternoon, take a boat cruise on Lake Mburo for stunning sunset wildlife photography. You'll see schools of hippos, Nile monitor lizards, and many water birds. The open floodplains and acacia woodlands are different scenery from Bwindi's jungle. Enjoy dinner at the lodge under stars – Mburo is one of the few Uganda parks with exciting nocturnal wildlife.

(**Optional:** Night game drive to spot leopard, hyena or bushpig – available at extra cost.).



Day 5: Morning Game Drive & Return to Kampala (Approx. 250 km, ~5 hrs)

Rise early for a guided game drive in Lake Mburo NP, which might reveal zebra, impala, buffalo, and if lucky, the lone lion that roams here.

After safari breakfast at the lodge, bid farewell to the park and drive back towards Kampala/Entebbe (via Mbarara, 250 km).

Arrive by late afternoon, drop off at the airport or hotel.

End of itinerary